



TOGETHER AS ONE IN TRUTH AND KNOWLEDGE

ST MARY'S PRIMARY SCHOOL

HOMEWORK POLICY

RATIONALE

At St Mary's Primary School, we believe that homework helps students by complementing and reinforcing classroom learning, fostering good lifelong learning and study habits and providing an opportunity for students to be responsible for their own learning. Homework provides an opportunity for parents to participate in their child's education. Parents in partnership with the school should encourage children to establish good homework patterns from early primary school.

AIMS

- To support and extend classroom learning
- To develop positive study habits
- To develop a responsibility for self-learning
- To foster communication between home and school
- To nurture a love of reading

IMPLEMENTATION

- St Mary's Homework Policy will be available to parents on the school website.
- Homework will not be set to be completed over a weekend or holiday period.
- Assessment tasks will not be given as homework.
- Teachers may request homework activities to be signed by a parent or caregiver.
- Homework should be appropriate to student's skill level. Teachers are not required to individualise homework however should take into account the abilities of students with additional needs when setting tasks and may alter the task accordingly.

St Mary's Primary School, Crookwell: Policy Updated 2019

IN EXCELLENCE, CARE FOR OTHERS, JUSTICE, SERVICE AND RESPECT



TOGETHER AS ONE IN TRUTH AND KNOWLEDGE

ST MARY'S PRIMARY SCHOOL

- Reading is an essential part of homework.
- Reading homework helps develop many other essential skills such as spelling, writing, comprehension, concentration and imagination.
- Early Stage 1 will not be expected to complete written homework activities, the students will be sent home 'readers' and/or sight words which require that their reading is listened to and practised each week night.
- Stage 1 students may on occasions be set some limited written work. However, most homework at this stage is primarily practising reading and spelling skills. The students will be sent home 'readers' and sight words, which require that their reading is listened to each weeknight.
- Stage 2 students are encouraged to read each week night. Other homework tasks could include spelling and times tables revision and incomplete class tasks.
- Stage 3 students are encouraged to read each weeknight. Other homework tasks could include spelling and times tables revision, continuation of classroom work, projects and/or research assignments.
- Each term one week will be designated as "Family Week" when no homework will be issued.
- No consequences will be given to children who cannot complete homework tasks.

POLICY REVIEW

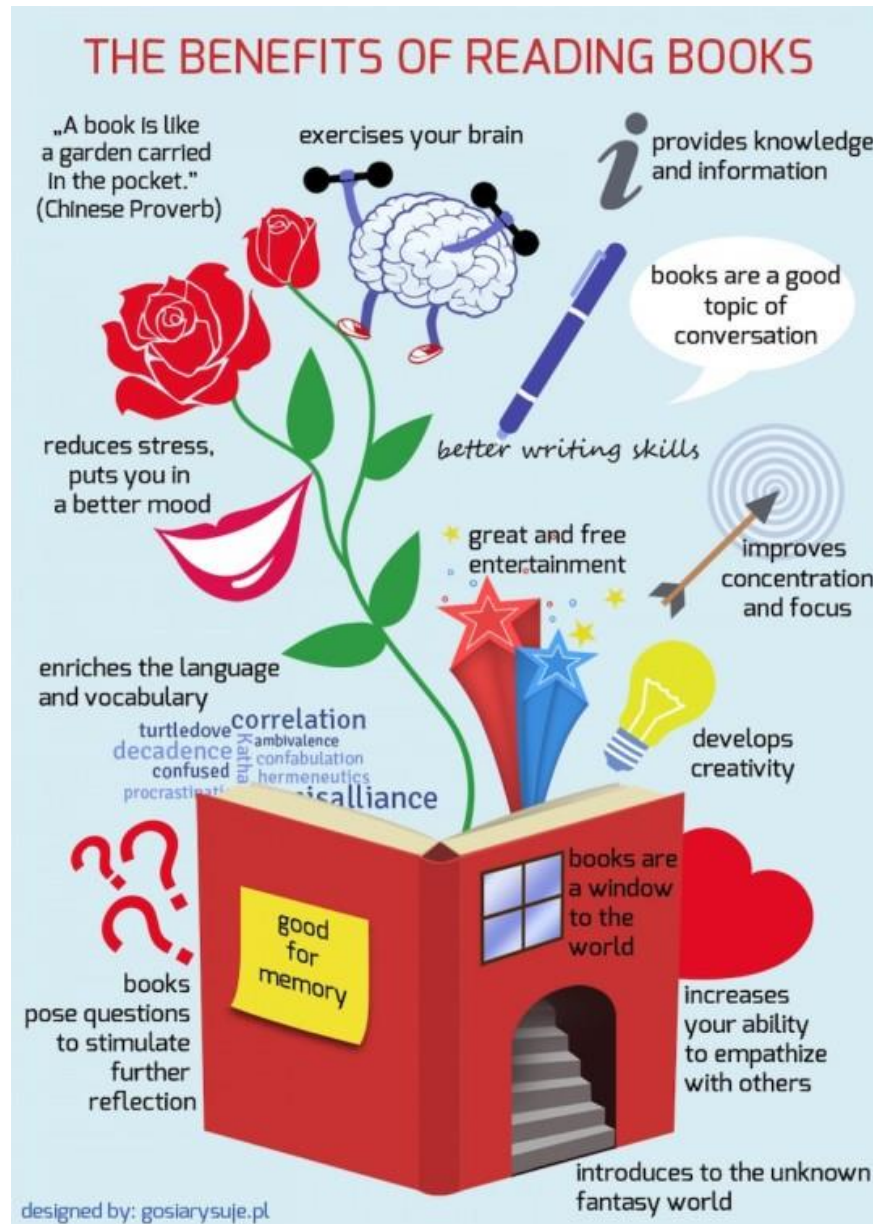
The policy will be reviewed again in 2020 unless changes are made prior to that date.



TOGETHER AS ONE IN TRUTH AND KNOWLEDGE

ST MARY'S PRIMARY SCHOOL

Suggestions for Newsletter images to support reading



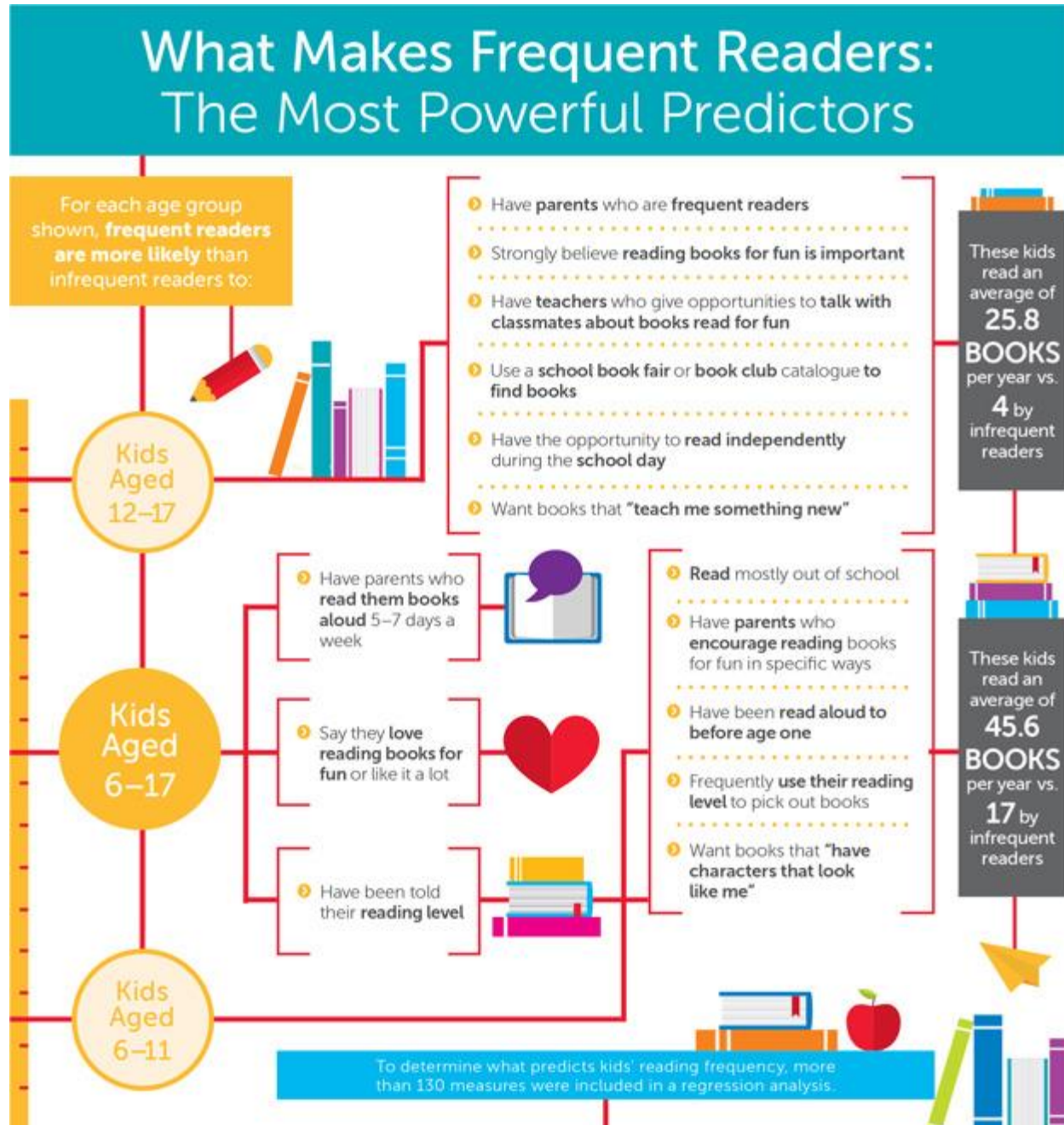
St Mary's Primary School, Crookwell: Policy Updated 2019

IN EXCELLENCE, CARE FOR OTHERS, JUSTICE, SERVICE AND RESPECT



TOGETHER AS ONE IN TRUTH AND KNOWLEDGE

ST MARY'S PRIMARY SCHOOL



St Mary's Primary School, Crookwell: Policy Updated 2019

IN EXCELLENCE, CARE FOR OTHERS, JUSTICE, SERVICE AND RESPECT

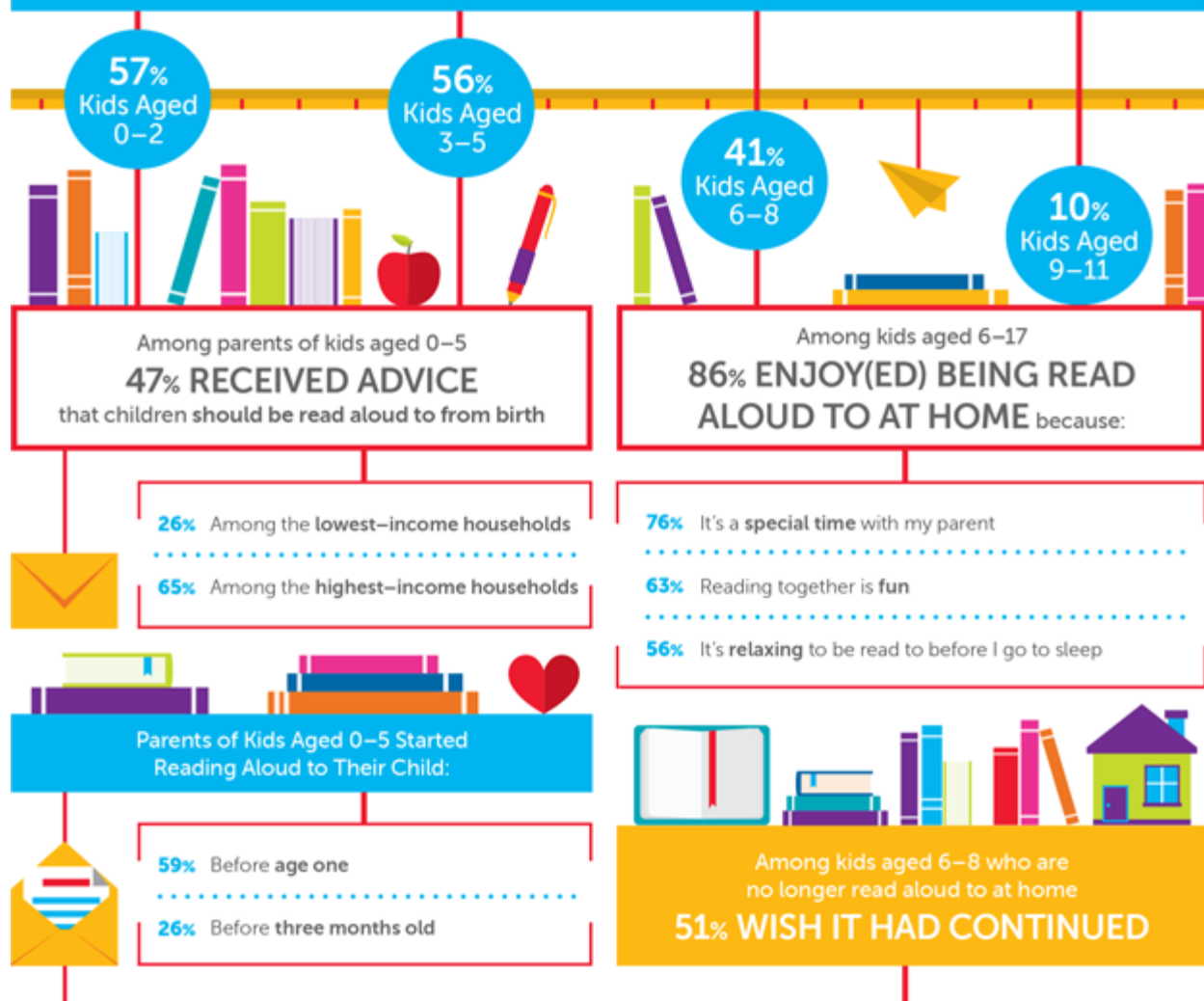


TOGETHER AS ONE IN TRUTH AND KNOWLEDGE

ST MARY'S PRIMARY SCHOOL

Read Aloud: Start Early & Keep Going

Percentage of Kids Aged 0–11 Who Are Read Books Aloud 5–7 Days a Week:



St Mary's Primary School, Crookwell: Policy Updated 2019

IN EXCELLENCE, CARE FOR OTHERS, JUSTICE, SERVICE AND RESPECT